



ROTALUBE

Ultimate Chain Lubricator

Unique Chain Lubrication System

The revolutionary RotaLube chain lubricator is a unique and precise method of applying lubrication oil onto industrial chains.

At present the most common systems used to lubricate chains are:

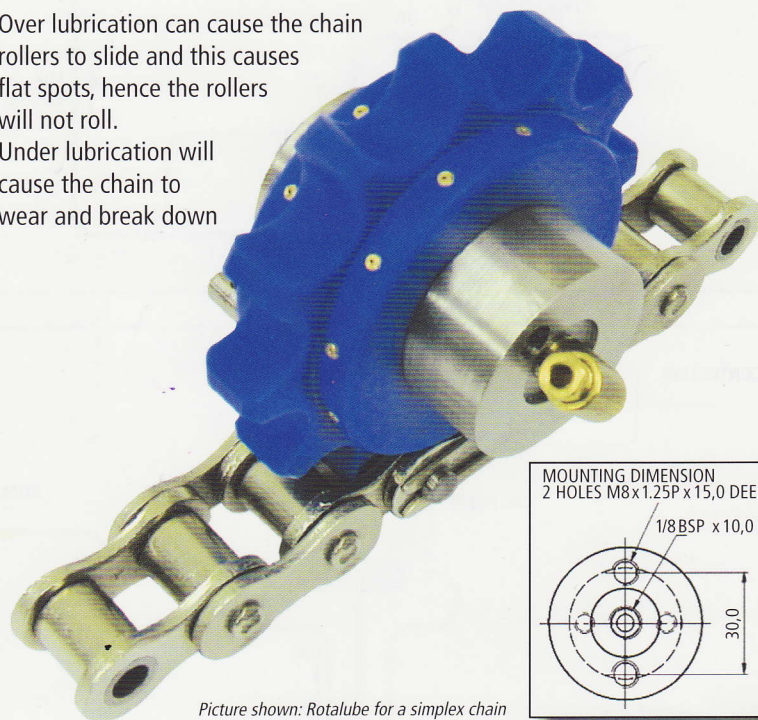
Drip Feed Application.

Unreliable and erratic

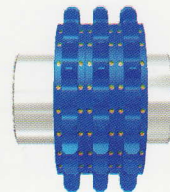
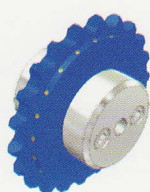
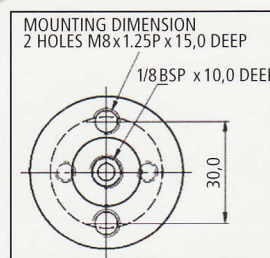
Manually Applied.

Lubricant is either applied by hand or spray can, both methods are costly and can be erratic being totally dependent on the human element to ensure that the lubrication is carried out. With this method of application the chain is over lubricated when a lubrication schedule takes place, but the film of lubricant is not maintained in-between lubrication cycles.

Over lubrication can cause the chain rollers to slide and this causes flat spots, hence the rollers will not roll. Under lubrication will cause the chain to wear and break down



Picture shown: Rotalube for a simplex chain



Static Brush Application.

This method demands constant maintenance. Application brushes clog up and bristles wear and are vulnerable to potential damage, soon after installation.

Spit/Spray System.

Currently the most commonly installed lubrication system for chains on large installations. It is very expensive to install.

There is also a danger of inaccurate lubrication, when, after time the chain expands, which moves the pitch of the pins; yet the static lubrication point of the spray nozzles does not compensate for this. Nozzles also get damaged and knocked out of position, so even if the system is operating, the oil is not penetrating the pins exactly where required.

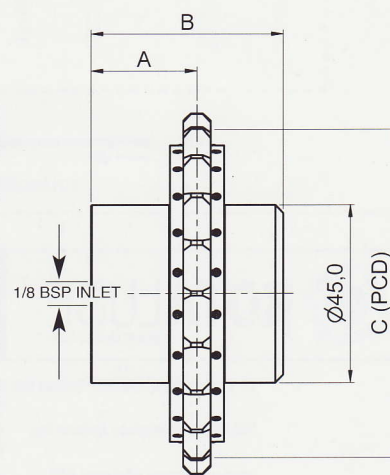
The RotaLube chain lubricator answers all the problems outlined above. It is a controlled applicator that does not suffer from excessive wear. It will not 'clog up' and maintains accurate lubrication whatever the condition of the chain and pins.

Standard Rotalube Applicators (Simplex)

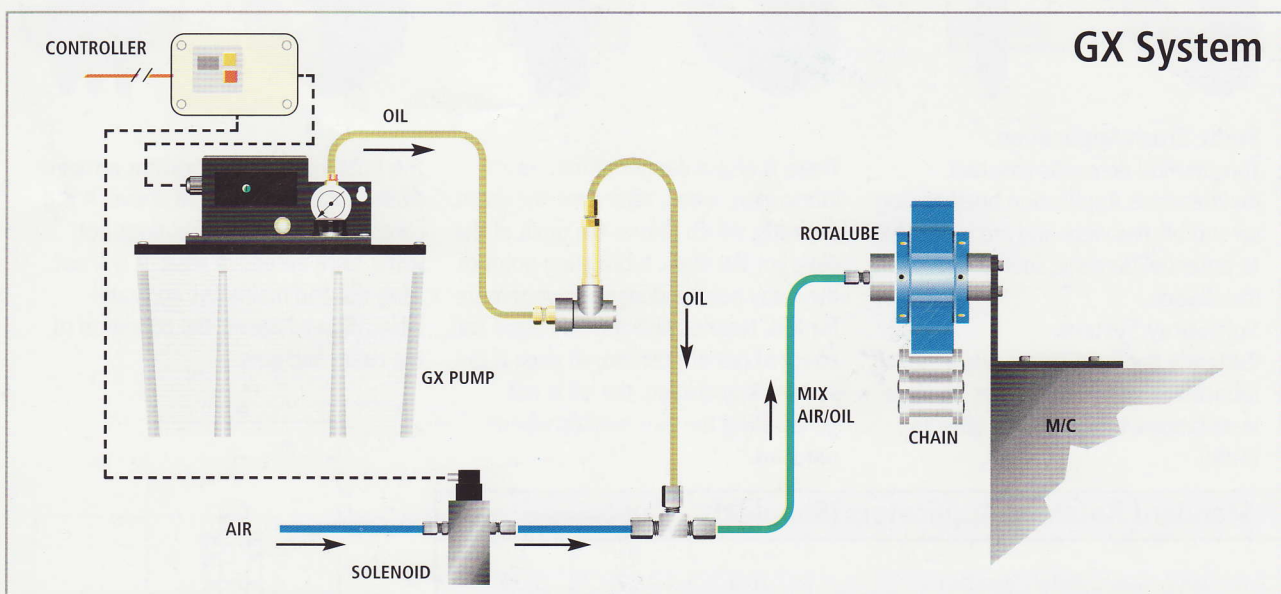
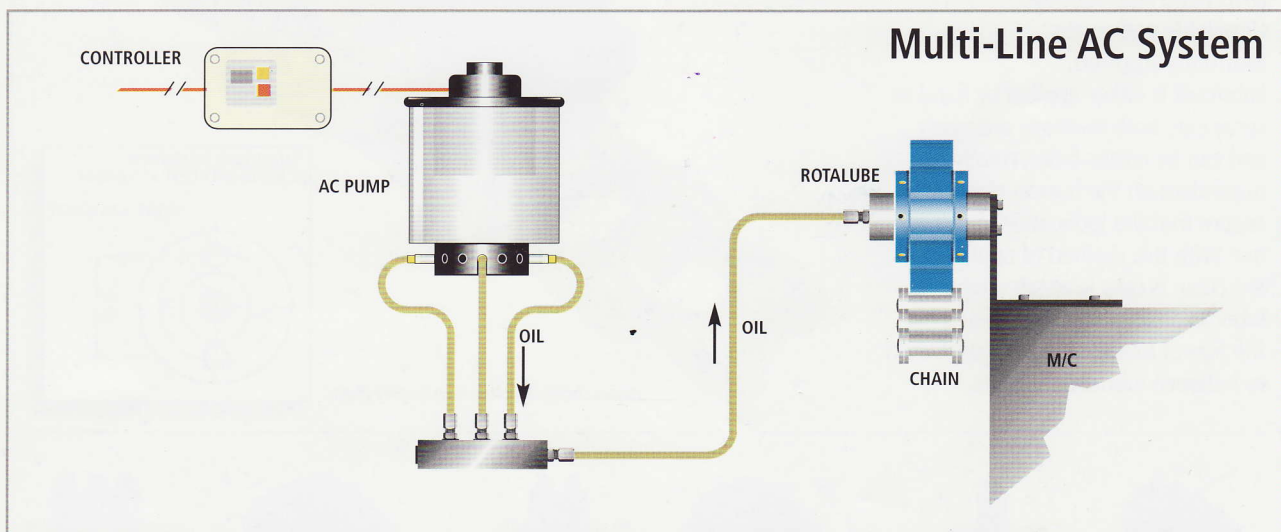
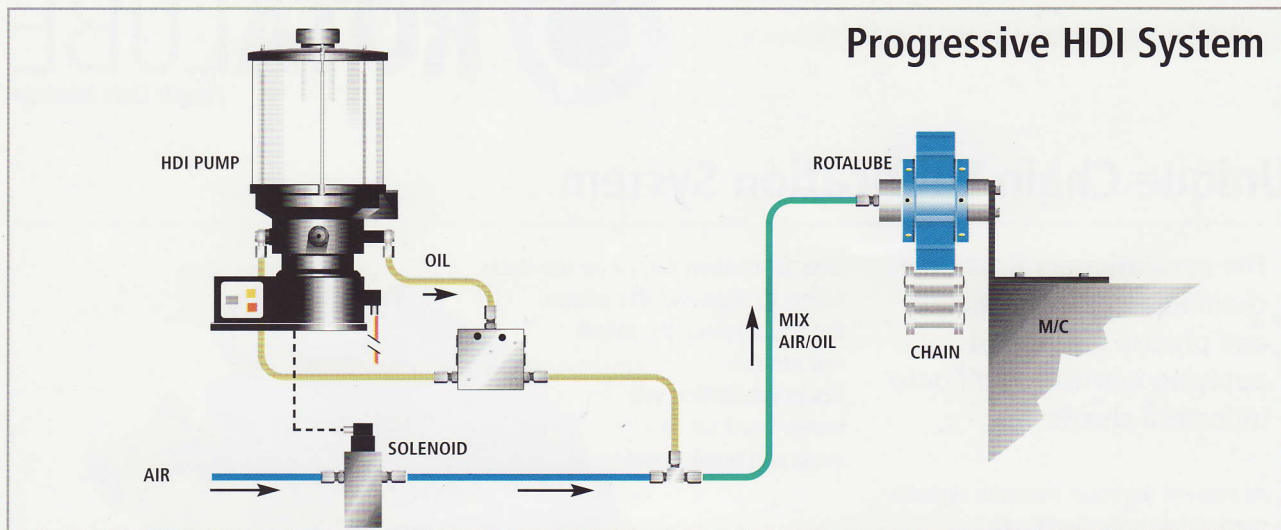
A,B,C Dimensions mm

			A	B	C
RL- 08B1	1/2"	British Standard	26.9	48.8	89.2
RL- 10B1	5/8"	British Standard	28.3	51.5	91.4
RL- 12B1	3/4"	British Standard	29.5	54.0	91.6
RL- 16B1	1"	British Standard	35.9	66.8	98.1
RL-ASA40-1	1/2"	American Standard	27.2	49.3	89.2
RL-ASA50-1	5/8"	American Standard	29.0	53.0	91.4
RL-ASA60-1	3/4"	American Standard	31.4	57.7	91.6
RL-ASA80-1	1"	American Standard	34.6	64.2	98.1

Bespoke larger size applicators are available on request



Typical Applications for a Rotalube System



www.interlubesystems.com



UK Headquarters: Interlube Systems Ltd: St Modwen Road, Parkway Industrial Estate, Plymouth, Devon, England, PL6 8LH.
Tel: +44 (0)1752 676000 Fax: +44 (0)1752 676001 Email: Info@interlubesystems.com
USA Division: Interlube Systems Inc: 4696 Wadsworth Road, Dayton, Ohio 45414, USA
Tel: (937) 2764507 Fax: (937) 2764518 Email: nmackay@earthlink.net
Interlube Systems (Malaysia) SDN: 30, Jalan Appollo U5/189, Bandar Pinggiran Subang Sesyen, 40150 Shah Alam, Selangor, Malaysia.
Tel: (603) 7845 5377 Fax: (603) 7845 5977 Email: acllube@streamyx.com

ISSUE 02/2010