

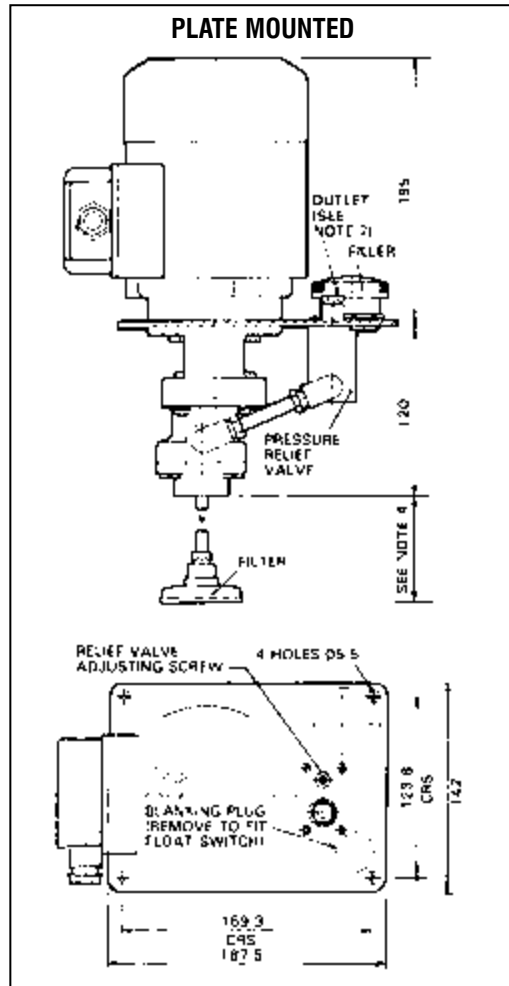
## RESERVOIR-MOUNTED GEAR PUMPS

Reservoirs are available in three standard sizes - 6, 12 and 25 litres. Other sizes of reservoir can be provided by special arrangement. Interlube recommend that the ratio of the reservoir capacity in litres to the pump output in lt/min should not exceed 10:1.



### NOTES

1. Relief valve setting must not exceed maximum pressure of motorised pump (see previous details).
2. See previous pages for pump and motor details.
3. The mounting centres suit the standard range of reservoirs - 6, 12 and 25 lt. Other reservoirs are available to special order.
4. When supplied without reservoir, filter is supplied with 300 mm of tube to be cut to required length.
5. A float switch is available as an optional extra and must be ordered separately. To fit float switch remove the banking plug.
6. Outlet: 1/4 BSP/6mm OD for 0.5lt/min pump.  
1/4 BSP/10mm OD for 3lt/min pump.



### METHOD OF ORDERING (ALL MOTORISED AND RESERVOIR MODELS)

Part No. MGP **X X X Q** VARIATIONS

#### PUMP OUTLET (Nominal)

- 1 0.5 lt/min
- 2 3 lt/min
- 3 9 lt/min
- 4 16 lt/min

#### MOUNTING OPTION

- 1 Foot Mounted
- 2 Foot Mounted with Relief Valve
- 5 Plate Mounted (R/Valve standard)
- 6 Plate Mounted with 6 lt Reservoir
- 7 Plate Mounted with 12 lt Reservoir
- 8 Plate Mounted with 25 lt Reservoir

#### VOLTAGE

- 1 110V, 1 ph, 50 Hz
- 2 240V, 1 ph, 50 Hz
- 3 380/440V, 3 ph, 50/60 Hz
- 4 110V, 60 Hz
- 5 240V, 60 Hz

- Notes**
1. 9 lt/min and 16 lt/min models not supplied plate mounted.
  2. 0.5 lt/min foot mounted model not available with integral relief valve.
  3. Single phase only available on 0.5 lt/min pump.
  4. IP54 Motors are standard.

# INTERLUBE

Leaders in Lubrication Solutions

#### UK Headquarters:

#### Interlube Systems Ltd

St Modwen Road, Parkway Industrial Estate, Plymouth, Devon, England PL6 8LH

Tel: +44 (0)1752 676000 Fax: +44 (0)1752 676001

e-mail: [info@interlubesystems.com](mailto:info@interlubesystems.com) Web Site: [www.interlubesystems.com](http://www.interlubesystems.com)

#### USA Headquarters:

#### Interlube Systems Inc

4696 Wadsworth Road, Dayton, Ohio, 45414, USA

Tel: +1 937 276 4507 Fax: +1 937 276 4518

e-mail: [Nmackay@earthlink.net](mailto:Nmackay@earthlink.net)



[www.interlubesystems.com](http://www.interlubesystems.com)  
HELP DESK • PRODUCT RANGE • LITERATURE REQUEST

For advice on which product is most suitable for your needs - visit our web site from where you can e-mail us your requirements. Our Help Desk will respond within 24hrs by return e-mail or phone.



# **INTERLUBE**

*Leaders in Lubrication Solutions*



## GEAR PUMP Centralised Lubrication System Multi-Industry Applications



*Interlube Systems Ltd - maximising industrial performance world-wide...*

## FLANGED GEAR PUMPS

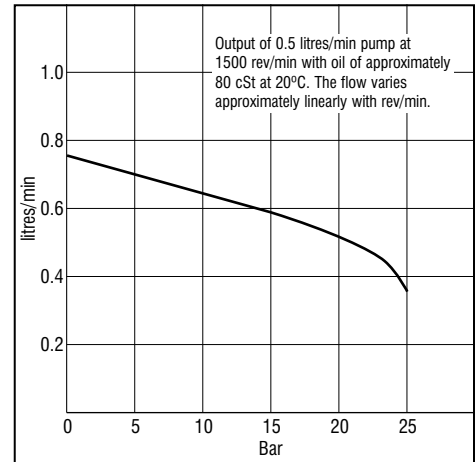
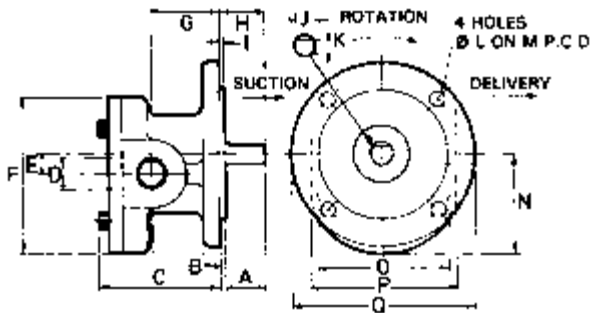
Interlube gear pumps are specifically designed for continuous and cyclic automatic lubrication systems. They are supported by an extensive range of accessories suitable for a wide variety of industrial applications.

The pump bodies are manufactured from high grade cast iron, the rotors and shafts are steel, and the seals nitrile rubber. The pumps are suitable for oils and fluid grease.

Pumps are available with flange mounting for mechanical drive, motorised foot mounted, or reservoir mounted. Four sizes of pump are available with outputs of 0.5, 3, 9 and 16 lt/min. On motorised versions the maximum rated operating pressure is 25 bar for the 0.5 lt/min pump, 10 bar for the 3 lt/min and 9 lt/min, and 5 bar for the 16 lt/min pump. For higher pressures consult Interlube Systems Ltd.



### Gear Pump - 0.5 litres/min (1.0 ltr/min @2,800 rpm)



Dimensions																
A	B	C	D	E	F Ø	G	H	I	J Ø	K	L Ø	M	N	O Ø	P	Q
16	6	48	1/4 BSP	8.2	63	26	18	2	7.99	6.45	5.5	60	40	49.975	58	73
									7.98	6.35				49.950		

#### Part No. GP1

Maximum permissible pressure 25 bar

Maximum permissible rev/minute at 25 Bar - 1500

Maximum permissible rev/minute at 5 Bar - 3000

## MOTORISED GEAR PUMPS



### FOOT MOUNTED MOTORISED GEAR PUMPS

All motors are continuously rated, TEFC, minimum IP54 rating, nominal 1400 rev/min

Standard Voltage options:-

110V, 1 ph, 50/60 Hz

240V, 1 ph, 50/60 Hz

380/440V, 3 ph, 50/60 Hz

See ordering details, for alternative voltages contact Interlube Systems Ltd.

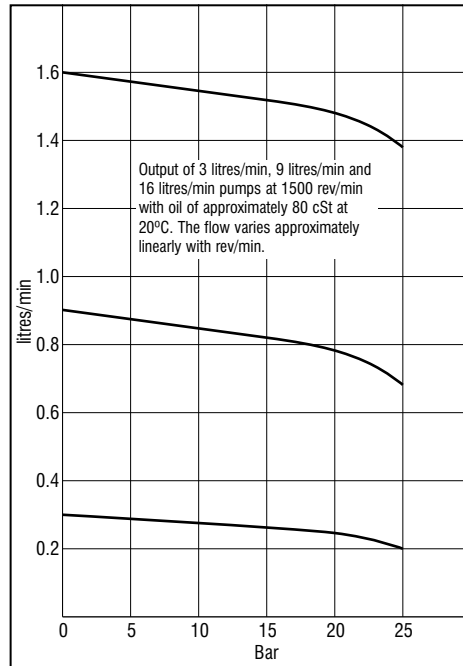
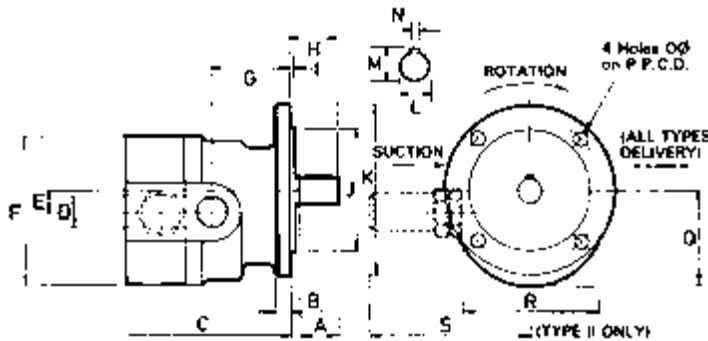
**Recommended pipe bare sizes (mm)**

	0.5 L/min	3 L/min	9 L/min	16 L/min
Suction	8	10	12	18
Delivery	4	6	10	12

**Bi-rotational gear pumps**

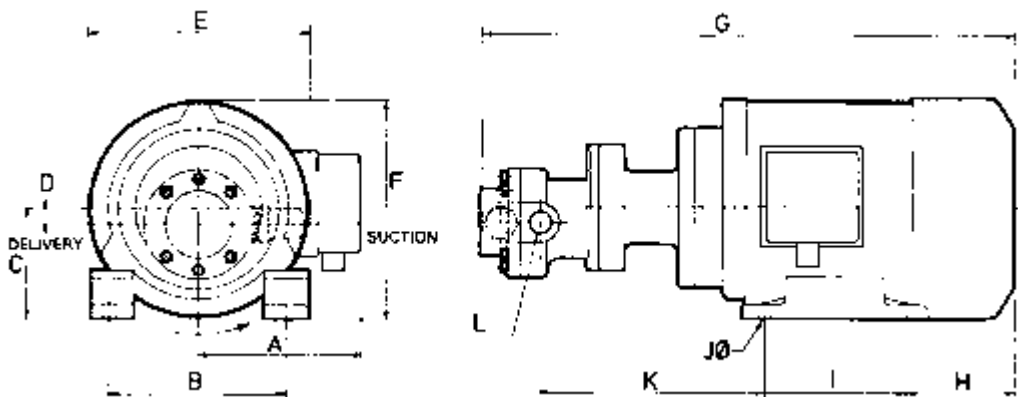
Bi-rotational versions of the pump are available to special order. These units can be driven in either direction without affecting the position of suction and delivery, the positions of which must be specified.

**Gear pumps - 3,9,16 Litres/min**



Model Variants			
Type	Outputs & Part Numbers		
	3 L/min	9 L/min	16 L/min
Type I (standard pump)	GP2	GP3	GP4
Type II (standard pump with adjustable relief valve)	GP21	GP31	GP41
Type III (bi-rotational pump)	GP22	GP32	GP42

Dimensions																			
Size	A	B	C	D	E	F	G	H	I	J	K	L	M	N	O	P	Q	R	S
3 lt/min	15	6	69	1/4 BSP	9	61	32	18	2	49.975	70	10.007	11.2	3	5.5	60	40	56	66
9 lt/min	20	7	91	3/8 BSP	13	82	44	25	3	69.970	100	12.008	13.5	4	7	84	54	76	76
16 lt/min	20	8	111	1/2 BSP	15	98	54	25	3	89.964	120	14.008	16	5	7	100	65	90	85
										89.929		13.997							



Size (nominal)	Motor Size	Maximum Pressure	Dimensions																
			A	B	C	D	E	F	G	H	I	J	K	L					
0.5 lt/min	63 frame, 0.18 kW	25 bar	95	100	63	8	123	125	295	73	80	6	122	1/4 BSP					
3 lt/min	63 frame, 0.18 kW	10 bar	95	100	63	9	123	125	316	73	80	6	128	1/4 BSP					
9 lt/min	71 frame, 0.37 kW	10 bar	115	112	71	13	142	142	374	80	90	7	159	3/8 BSP					
16 lt/min	71 frame, 0.37 kW	5 bar	115	112	71	15	142	142	394	80	90	7	169	1/2 BSP					

**Note:** Dimensions are in mm except where stated.

Other flow rates at various alternative motor speeds available on request.