

## RADIAL MAJOR - Direct Rotary Drive (from parent machine)

### METHOD OF ORDERING

Prefix	AFA	AFB	AFC
Reservoir Capacity	4.5 kg (10lbs)	9 kg (20lbs)	27 kg (60 lbs)

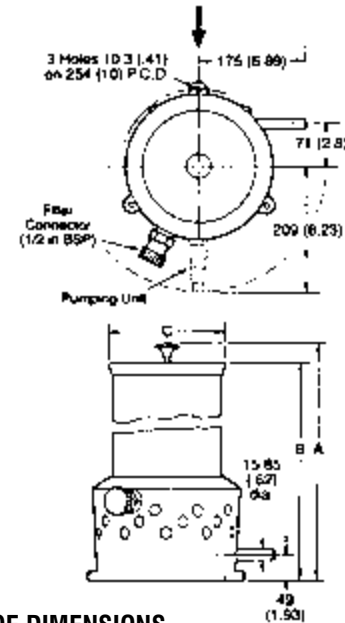
No. of Outlets	Catalogue No.
10	1448
20	1449
30	1450

**Example:** AFA 1449 is a 10 lbs (4.5 kg) capacity lubricator with 20 outlets.

### SPECIFICATION

<b>Max Drive Shaft Speed</b>	1000 rpm
<b>Min Drive Shaft Speed</b>	10 rpm
<b>Internal Reduction Ratio</b>	80 : 1
<b>Max No. of Pumping Units</b>	30
<b>Reservoir Capacities</b>	4.5 kg (10lbs) 9kg (20lbs) 27kg (60lbs)
<b>Lubricants</b>	Heavy oil and NGLI Grade 2 greases. For Grade 3 grease applications please consult Interlube Systems Ltd.

**NB:** Radial Major pumping units, blanking plugs and sealing washers are ordered and supplied separately. See page 2 for this information



**TABLE OF DIMENSIONS**

Type	'A'	'B'	Dia. 'C'
AFA	629 (24.76)	438 (17.24)	187 (7.36)
AFB	1098 (43.23)	641 (25.24)	187 (7.36)
AFC	1251 (49.25)	730 (28.74)	259 (10.2)

*Note:* All dimensions are in Millimetres with Inch equivalents in brackets.

## RADIAL MINOR - Direct Rotary Drive (from parent machine)

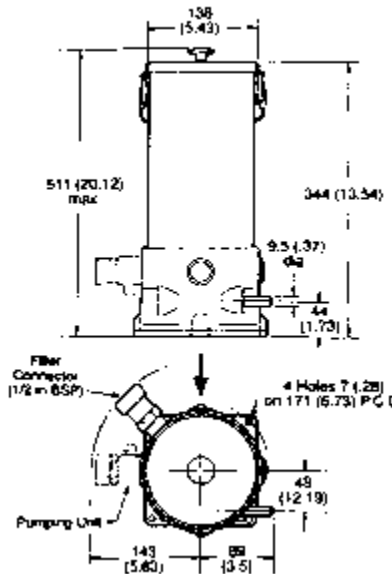
### SPECIFICATION

<b>Catalogue No.</b>	AF1467
<b>Max Drive Shaft Speed</b>	500 rpm
<b>Min Drive Shaft Speed</b>	25 rpm
<b>Internal Reduction Ratio</b>	50 : 1
<b>Max No. of Pumping Units</b>	4
<b>Reservoir Capacities</b>	3 kg (7lbs)
<b>Lubricants</b>	Heavy oil and NGLI Grade 2 greases. For Grade 3 grease applications please consult Interlube Systems Ltd.

**NB:** Radial Minor pumping units and their blanking plugs are ordered and supplied separately. See page 3 for this information

### Direction of Drive

LH drive as viewed from the arrow is supplied as standard, RH drive is available to special order.



**INTERLUBE**  
Leaders in Lubrication Solutions

### UK Headquarters:

#### Interlube Systems Ltd

St Modwen Road, Parkway Industrial Estate, Plymouth, Devon, England PL6 8LH

Tel: +44 (0)1752 676000 Fax: +44 (0)1752 676001

e-mail: [info@interlubesystems.com](mailto:info@interlubesystems.com) Web Site: [www.interlubesystems.com](http://www.interlubesystems.com)

### USA Headquarters:

#### Interlube Systems Inc

4696 Wadsworth Road, Dayton, Ohio, 45414, USA

Tel: +1 937 276 4507 Fax: +1 937 276 4518

e-mail: [Nmackay@earthlink.net](mailto:Nmackay@earthlink.net)



**INTERLUBE**  
Leaders in Lubrication Solutions



## RADIAL GREASE SYSTEM Centralised Lubrication System Multi-Industry Applications

Radial Major and Minor pumps are available for direct drive (parent machine) or as complete motorised/reduction drive assemblies.

Lubricant delivery is provided by individual adjustable pumping units located radially around the pump body and actuated by an internal cam.

Each pumping unit is calibrated to permit adjustment during operation. When the optimum delivery rate is established the setting is locked and no further action is necessary.

The Radial Minor has a maximum of 4 pumping units while the Major can accommodate up to 10, 20 and 30 pumping units.

The feed line from the pumping unit is generally routed direct to the bearing point but additional points can be included by utilising a progressive distributor block in the line.

Motorised Radials are available with a choice of geared reduction drives to govern maximum delivery rates and with a range of reservoir capacities.



*Interlube Systems Ltd - maximising industrial performance world-wide...*

[www.interlubesystems.com](http://www.interlubesystems.com)  
HELP DESK • PRODUCT RANGE • LITERATURE REQUEST

For advice on which product is most suitable for your needs - visit our web site from where you can e-mail us your requirements. Our Help Desk will respond within 24hrs by return e-mail or phone.

## RADIAL MAJOR - Motorised Reduction Drive

This assembly comprises a Radial Major lubricator driven by a helical geared electric motor mounted on a base plate. The integral reservoir includes a level indicator and an impeller which insures that the pumping units remain continually primed.

### Performance

Delivery per pumping unit per hour		
Gear Motor Speed (RPM)	MIN	MAX
36	0.5 cc	13 cc
57	0.8 cc	21 cc
90	1.3 cc	34 cc
148	2.2 cc	55 cc

Other geared motors are available to special order.



## RADIAL MINOR - Motorised Reduction Drive

This assembly comprises a Radial Minor lubricator driven by an electric motor and mounted on a base plate. The integral reservoir includes a level indicator and an impeller which ensures that the pumping units remain continually primed.

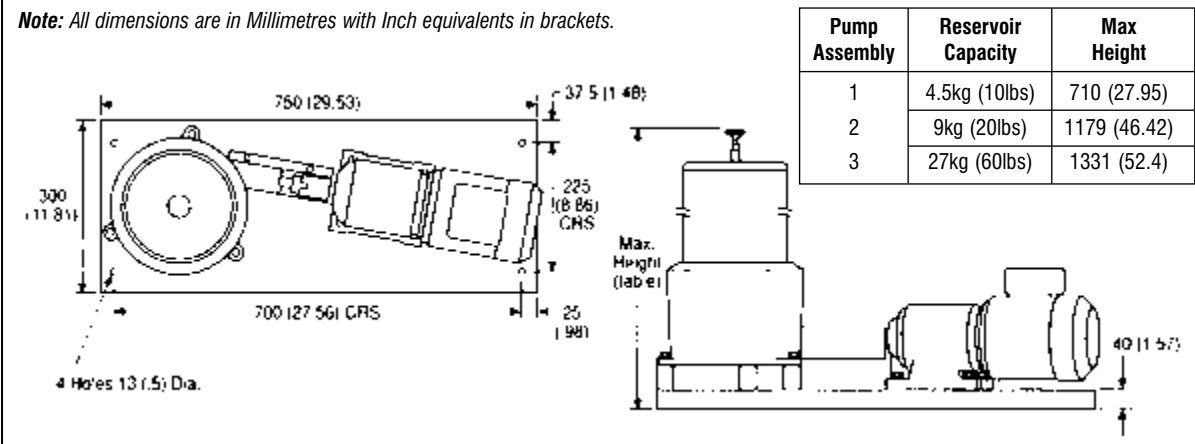
### Performance

Delivery per pumping unit per hour		
Gear Motor Speed (RPM)	MIN	MAX
39		9.36 cc
56	Adjustable to Zero	13.44 cc
97		23.28 cc
150		36 cc

Other geared motors are available to special order.

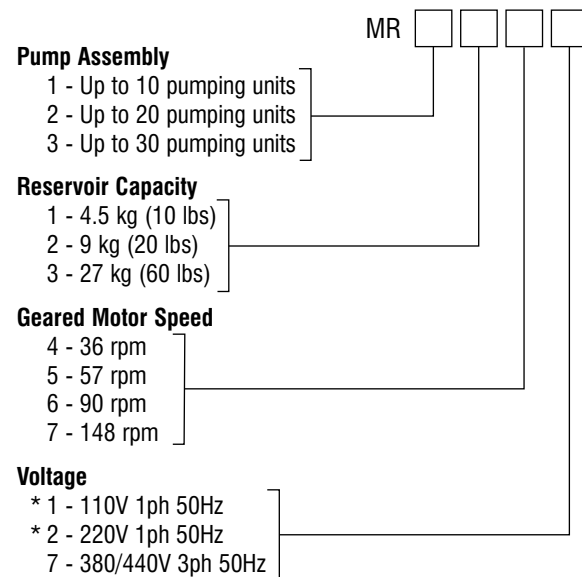


Note: All dimensions are in Millimetres with Inch equivalents in brackets.



### METHOD OF ORDERING

Radial Major motorised assemblies are ordered by compiling a simple matrix from the following information:

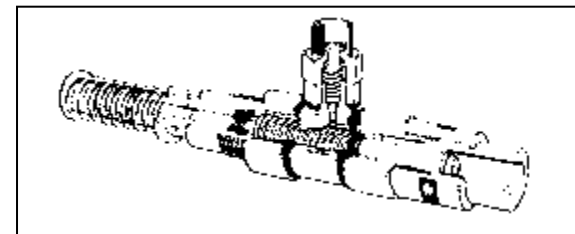


\* Not available for 36 rpm assemblies: Other voltage available on request.

**NB: Radial Major pumping units, blanking plugs and sealing washers are ordered and supplied separately.**

Example: MR2252 is a 20 unit assembly fitted with a 9 kg (20lbs) reservoir. The geared motor speed is 57 rpm powered by a 220V 1 ph 50 Hz electric motor.

### PUMPING UNITS



The required output is obtained by rotating a knurled ring and locking it into position with a hexagonal adjuster. To facilitate adjustment, three grooves are machined in the body indicating maximum, two thirds and one third output. Full clockwise rotation reduces output to the minimum value of 0.02 cc per stroke.

SPECIFICATION	
Delivery Per Stroke	0.02 - 0.5 cc
Max pressure	100 Bar (1450 lbf/in <sup>2</sup> )
Outlet connection	3/8 in OD (metric also available)
Lubricants	Heavy oil and NGLI Grade 2 greases. For Grade 3 grease applications please consult Interlube Systems Ltd.
Pumping Unit	Part No 67688
Blanking Plug	Part No 106050
Sealing Washer	Part No 28280

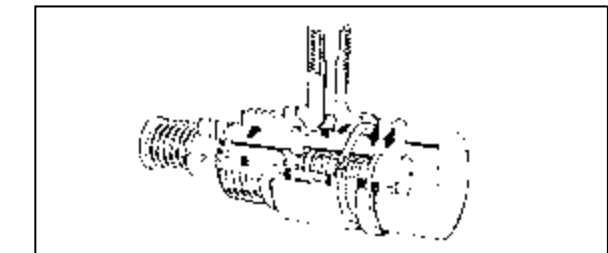
### METHOD OF ORDERING

Catalogue No.	Gearbox RPM	Voltage
AF1501	150	100/110V 1ph 50Hz (.5 Amp - 30 Watt)
AF1502	97	
AF1503	56	
AF1504	39	200/220V 1ph 50Hz (.3 Amp - 30 Watt)
AF1507	150	
AF1508	97	
AF1509	56	230/250V 1ph 50Hz (.25 Amp - 30 Watt)
AF1510	39	
AF1513	150	
AF1514	97	380/440V 3ph 50Hz (.15 Amp - 30 Watt)
AF1515	56	
AF1516	39	
AF1519	150	
AF1520	97	
AF1521	56	
AF1522	39	

**NB: Radial Minor Pumping units and plugs for unwanted outlets are ordered and supplied separately.**

Example: AF1514 is fitted with a 97 rpm gearbox and a 230/250V 1 ph 50 Hz electric motor.

### PUMPING UNITS



Output is controlled by rotating a spring loaded adjuster screw clockwise to increase and anticlockwise to decrease. The adjuster screw is then secured by a lock nut.

SPECIFICATION	
Delivery Per Stroke	0 - 0.2 cc
Max pressure	70 Bar (1015 lbf/in <sup>2</sup> )
Max No. Pumping Units	4
Reservoir Capacity	3kg (7lbs)
Outlet connection	1/4 in OD (metric also available)
Lubricants	Heavy oil and NGLI Grade 2 greases. For Grade 3 grease applications please consult Interlube Systems Ltd.
Pumping Unit	Part No 67801
Blanking Plug	Part No 34232-207
Sealing Washer	Part No 28280